



Bathtub/Whirlpool

42" x 72" x 21"

Above Floor Rough

Product Features

- + Factory plumbed, ready to install.
- + Can be installed in an island or alcove.
- + Pumps up to 60 gallons per minute with a 3/4 hp motor.
- + Eight jets, four scalloped pulse jets and four mini pulse jets.
- + High gloss acrylic surface for a brighter shine and better wear resistance.
- + Easy to install for both new construction and remodel products.
- + Covered with a protective film to maintain finish during installation.
- + Cardboard insert available for added protection. (Standard on whirlpools)
- + Factory installed inline heater available.
- + Made in USA.

SKUs

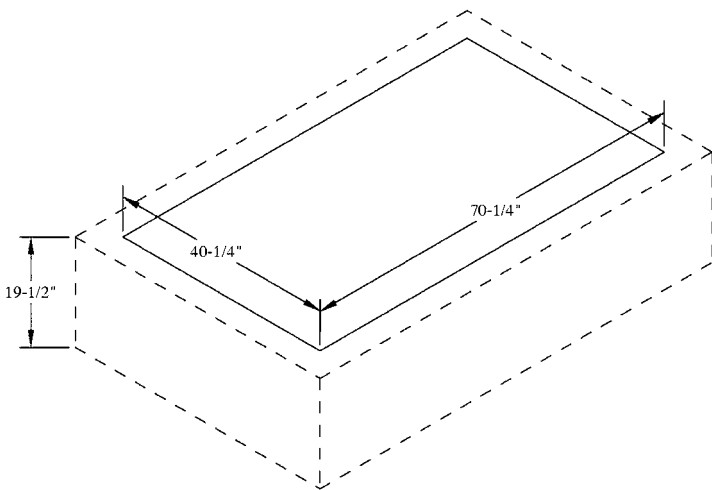
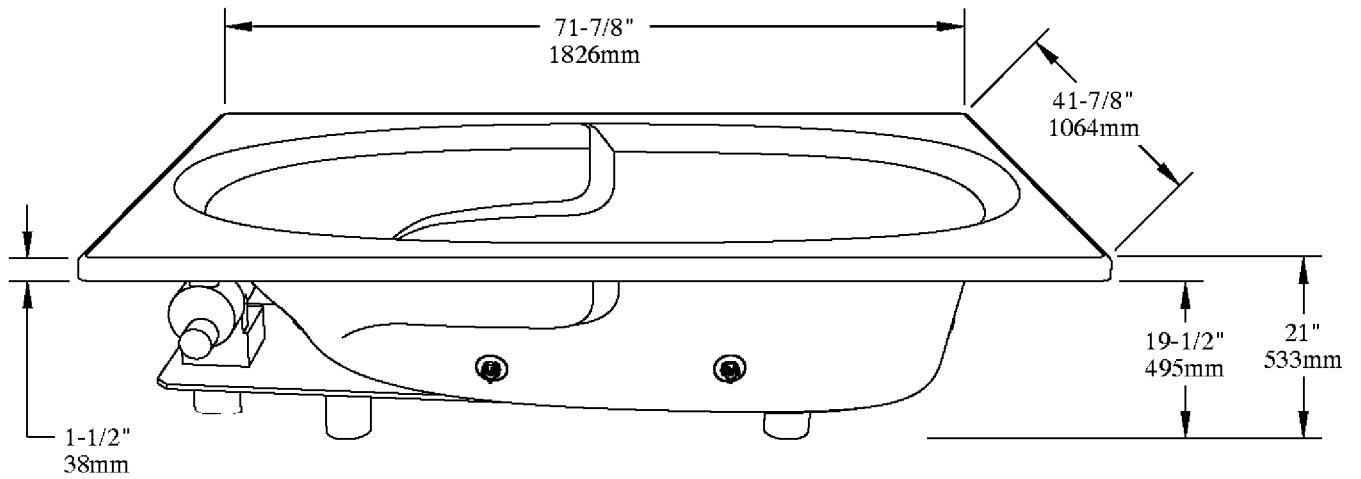
42" x 72" x 21" whirlpool	LSWLDLHxx4272-yy
42" x 72" x 21" bathtub	LSTLDxx4272

Inline Heater

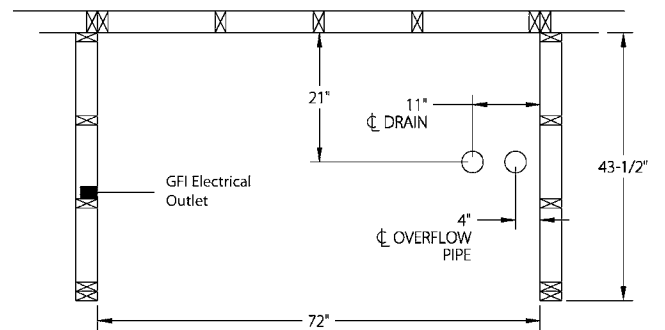
Factory Installed Add "H" to end of SKU.

Sold Separately HTR01

Trim Options for jets
(color code replaces "yy" in SKU)



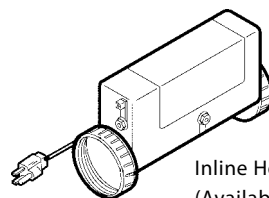
Specific island construction may vary, as long as cutout size and depth are correct. (Tub weight must be supported by feet).



RH Installation shown - reverse for LH installation. Tile Flange Kit available for alcove installation.

Access to pump/motor required for whirlpool installation. 20 amp GFI outlet required.

= Stud location



Inline Heater
(Available factory installed or sold separately, see reverse)

Lyons[®]
The finishing touch.